



EIKEI UNIVERSITY OF HIROSHIMA

■ By Air	
Tokyo	From Haneda Airport About 1 hour 20 minutes
	From Narita Airport About 1 hour 40 minutes
Hiroshima Airport	
By Airport Shuttle Bus (to JR Hiroshima Station) About 50 minutes	
■ By Bullet Train (Shinkansen)	
Tokyo	From JR Tokyo Station About 3 hours 45 minutes
Osaka	From JR Shin-Osaka Station About 1 hour 20 minutes
Fukuoka	From JR Hakata Station About 1 hour
JR Hiroshima Station	

Eikei University of Hiroshima
About 10 minutes on foot



EIKEI UNIVERSITY OF HIROSHIMA

<https://www.eikei.ac.jp/english>
 TEL: +81 (0) 82-225-6201
 E-mail: publicrelations@eikei.ac.jp
 1-5, Nobori-cho, Naka-ku, Hiroshima-shi, Hiroshima
 730-0016, Japan



EI KEI
 叡 啓
 (Pronounced as "AK")

叡 Represents Deep Wisdom
 啓 Represents Opening up a new era

2025

Department of Social System Design / Social System Design Course

EUH inspires you to take on new challenges every day.

Amidst this era of uncertainty, society needs changemakers who can boldly take on unsolved challenges and tenaciously pave the way for a new era.

Interacting with people with different values and diverse cultures on a daily basis will change your sensibilities and lead you towards growth.

Putting the knowledge and skills you learned into practice in society on a daily basis

will stimulate your intellectual curiosity and give you confidence.

Take on the challenge and dream of creating an ideal future.

Come and create an exciting *every day* together with us.

Message from the President

In the midst of increasing global uncertainty and deepening complexity, the economies in advanced countries are shifting their focus from tangible asset-based economies, primarily represented by manufacturing, to intangible asset-based economies exemplified by platformers. Amidst this backdrop, the advances of science and technology are accelerating, leading to a growing realization that many existing jobs may be replaced by computers and robots. On the other hand, the international political situations in Ukraine and Israel are affecting the economy, which is directly related to people's lives, so it is clear that the region is part of the global community. In this global environment, young people need to have the ability to greatly develop their high potential, to dream of a desirable society, and to realize it, rather than being swept away by the rapid changes of society. We call the potential for realizing dreams "competency," and we aim to help young people acquire this competency. Eikei University of Hiroshima is a 22nd century university that aims to develop changemakers who will bring about positive change in society. We hope that you will acquire the competencies to lead a new society.



President ARINOBU Mutsuhiro

He earned his Ph.D. in 1976 at the University of Tokyo Graduate School of Engineering (Doctor of Engineering). After serving as head of the Research and Development center as well as Executive Director at Toshiba Corporation (Former Tokyo Shibaura Electric Company), he became Executive Director at Yokohama National University in 2009, auditor at the University of Tokyo in 2010, and then Executive Director of the Institute of RIKEN in 2014. He then became Executive Director and Vice President of the University of Tokyo in April 2018 (until March 2021). He has also served as a member of the Ministry of Education, Culture, Sports, Science and Technology's Central Council for Education, the working group chairperson for the graduate school working group of that Council, member of the future design working group within the universities subdivision of that Council, advisor for the Japan Accreditation Board for Engineering Education (JABEE), and more.



For more details on the 5 competencies. >>>

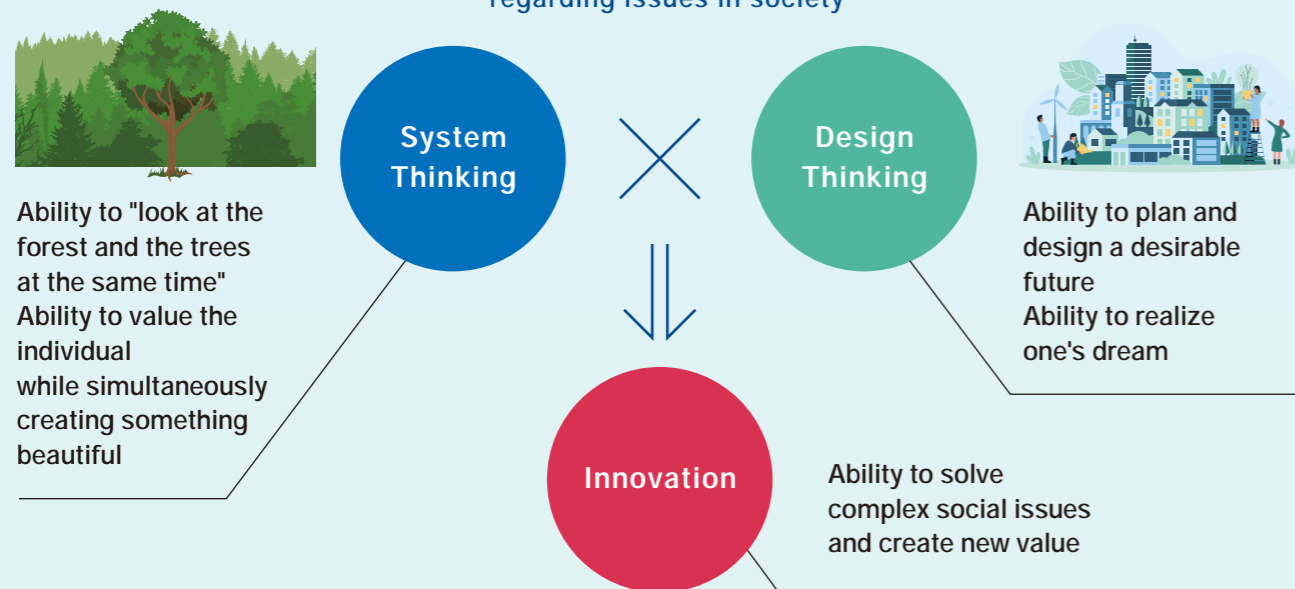


Identifying Social Issues and Designing New Values

Department of Social System Design / Social System Design Course

Social System Design

Methodology for posing questions and seeking solutions regarding issues in society



Department Outline

Our principles are "spontaneously creating a desirable future for society" and, to that end, "spontaneously finding problems, drafting solutions, and demonstrating leadership while collaborating with others to execute our plans in order to create new social value". Students will gain global communication skills through practical English competency and digital skills, as well as the methodologies of logical thinking, design thinking, and system thinking. Students take liberal arts courses that draw knowledge from both the humanities and sciences as well as project based learning (PBL) to engage in solving actual social issues and "experiential / practical programs" including volunteer activities and internships overseas. By doing so, students integrate their knowledge and capability in their "degree project", where they set their project theme freely and discover solutions.

EUH is a 22nd century-type "one and only" university that will deliver "Change Leaders" to society.

Half of the current professions and academic fields that exist today are said to disappear. With that in mind, the world does not appreciate people who can learn only, but people who can create learning. Not people who can do work only, but people who can create work. EUH will respond to that call by cultivating human resources through the study and practice of social system design.

Social system design is a methodology for inquiry and seeking solutions regarding complex issues in the society for which there is no right "answer".

We will foster the ability to plan, draft, and execute cutting-edge innovation through the integration of knowledge with endorsed by critical, design and system thinking throughout one's life for the well-being of the world.

If you want to be a Change-Maker rather than an observer of the society, this is the place for you to learn social entrepreneurship. The Department of Social System Design will surely meet your expectations and purpose. We are looking forward to seeing you here.

[Career] After graduating from the University of Tokyo in 1985, he worked in major positions at the Ministry of Finance and Financial Services Agency as well as various international organizations and overseas embassy in Paris, India, and Washington DC. He then served as executive managing director of the Regional Economy Vitalization Corporation of Japan, and represented Japan and five other countries at the Inter-American Development Bank (IDB). He has also served as Guest Professor and other titles at the Graduate School of System Design and Management of Kelo University since 2008. He is certified by PMI in the US as a Project Management Professional and serves as Board of Council member for the Japan Creativity Society, as vice-president of the Japan Association of Regional Development and Vitalization, and as auditor for the Society of Well-being.



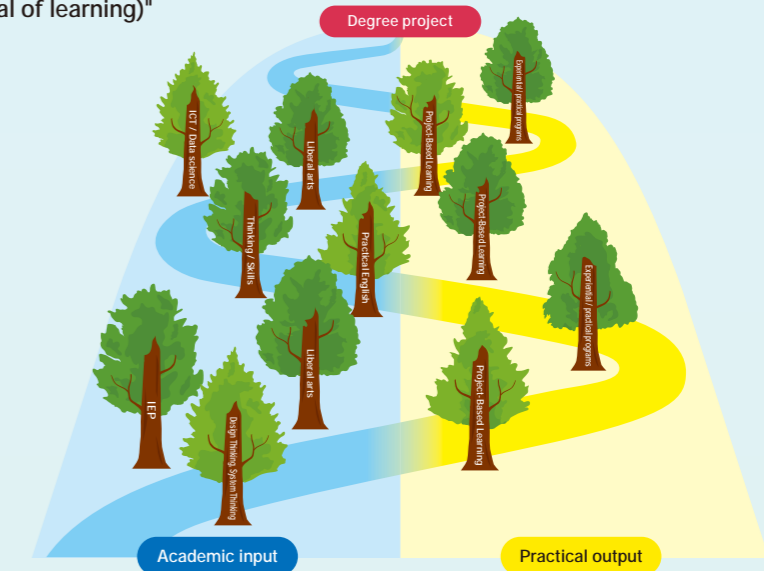
Dean and Professor,
YASUI Toshiyuki

Curriculum Policy

Academic input and practical output are repeated in the curricula.

Students repeatedly acquire knowledge and skills through "liberal arts courses", "basic tool courses", and "practical English". They also engage in practical output through "project-based learning" and "experiential / practical programs" in order to gain the competencies described in our Diploma Policy before engaging in the Degree Project. By taking courses based on their own awareness of issues and learning status, they aim to gain competencies and acquire a degree.

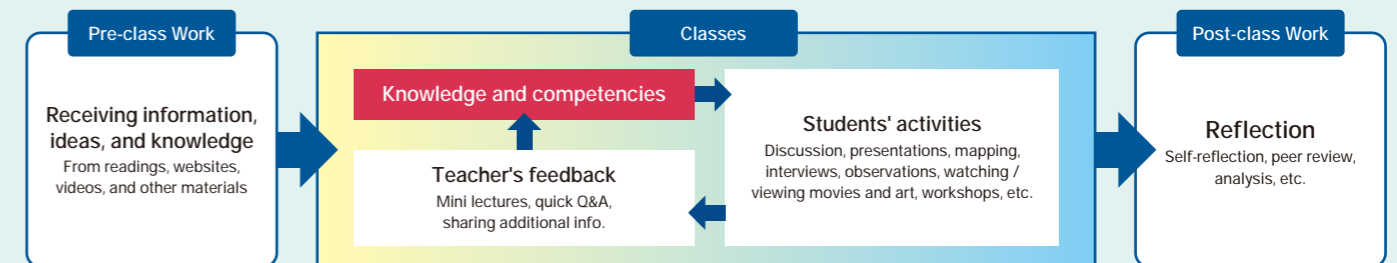
Original education system based on the "cycle of academic input and practical output (spiral of learning)"



For more details on the Curriculum Policy. >>>



Active Learning All courses and classes use a class style that encourages student participation.



Small classroom settings

25 students per class

Small classroom settings, limited to 25 persons per class

EUH provides small-sized classes up to 25 students in principle to make communication and learning effective for all students. * About 16 persons per class in the Intensive English Program.

Credits taken in English

62 credits or more

Students are required to take at least half of the 124 credits needed for graduation in English. With some exceptions (such as the classes in Japanese for international students), the same courses are offered in both English and Japanese, meaning students can graduate by taking all their courses in English, and it is an English-only environment.

Proactive learning

100-minute classes

100-minute classes for proactive learning

One-sided lectures by the faculty member will cover, at most, around 20% of class time. We ensure plenty of time for dialogue between students, group discussions, and Q&A.

International students

1 in 4 students

With about 20 international students for every 100 students per year as well as students from overseas universities on exchange, we aim for a globalized campus where about 1 in 4 students are from outside Japan. Daily English communication with international students who have different cultural backgrounds and values will allow students to acquire a sense of respect for others.

Concentrated learning

2 units in a row

Classes cover 2 units in a row to allow students to concentrate

Classes consist of back-to-back 100-minute units, thus reducing the courses that can be taken in parallel in the same semester for improved concentration on each class.

For more details on active learning. >>>



Skills gained at EUH 01

Global Mindset

Gaining the mindset you need to succeed in a global society.



A STUDENT'S VOICE

Studying across fields to cultivate the thinking skills needed in society

Social System Design Course 3rd-year
NAKA Haruki
From Osaka Prefecture (Osaka High School)

To survive in society as it changes at dizzying speeds, we need the ability to engage in problems with no clear answers. EUH offers courses on thinking skills, and Logical Thinking as well as Design Thinking, System Thinking that teach us how to think deeply about things from multiple angles, which is truly the foundation of problem-solving. I was particularly impressed by the Urban Environment course. There, we actually went to a waste disposal plant and dumping site as part of our class, learning about what our own daily lives consist of. I have become more interested in sustainable lifestyles and the SDG of "Sustainable cities and communities", and I hope to use the interdisciplinary and active learning I have gained through the liberal arts to explore our future.



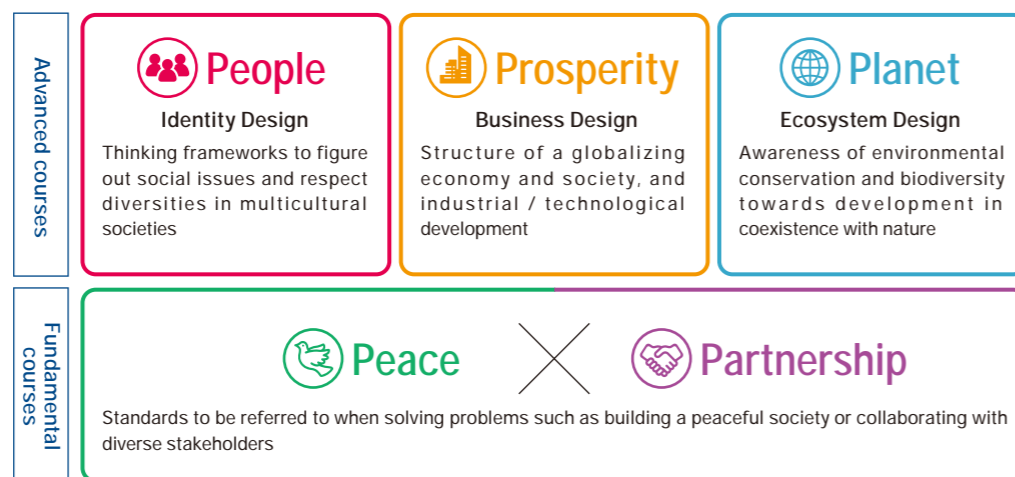
SDGs-oriented liberal arts (General courses)

The Sustainable Development Goals (SDGs) are international goals for sustainable development adopted by the UN General Assembly in 2015. At EUH, we aim to train young people to contribute to the establishment of integrated solutions to real-world problems while considering the direction of the 17 SDGs and aiming to contribute to the realization of a sustainable world. When examining social issues, we set the SDGs' 5Ps (Peace, Partnership, People, Prosperity, and Planet) as pillars for studying various interdisciplinary fields.



Pillars for learning: 5Ps

Peace and Partnership are considered methodologies common to all 17 SDGs, and therefore all students take these as "fundamental courses". Starting in their 2nd-year, students learn about People, Prosperity, and Planet as "advanced courses" for study of more specific issues. In these courses, students can select one of the 3Ps to focus on while also taking courses in other fields according to their interests.



ICT / Data science

Students will learn the basics of ICT and programming as well as how to utilize these as tools for solving problems and drafting projects (digital literacy). They will also learn methods for collecting and analyzing data for decision-making, which will cultivate their strategic skills for developing integrated solutions for real-world problems. There are also opportunities provided to learn about information logic, an important tool for utilizing ICT.



[Examples] Techniques for creating websites and apps, skills to effectively apply analysis results, skills for using IoT, AI, and data science, and more

Thinking skills

Students cultivate logical thinking, a basic thinking skill necessary for problem solving. They will also gain skills necessary in the problem-solving process in the real world, such as methods for carrying out projects and ways to promote debate and form a consensus in collaboration with others, thus nurturing their strategic skills for developing integrated solutions for real-world problems.



[Examples] Logical thinking, design thinking / system thinking, project management, facilitation, and more

Gain knowledge from both the humanities and the sciences that will be the foundation problem solving



Check out pages 9 and 10 for specific courses and curricula!

For more details on the liberal arts. >>>



Collaborative classes with Stanford University SPICE allows students to experience cutting-edge innovation

Since AY 2023, EUH has offered the "Social Entrepreneurship" class in English in collaboration with Stanford University SPICE. In this class, students learn about social innovation from expert faculty members at Stanford University SPICE. Specifically, students deepen their understanding of social innovation and social entrepreneurship and cultivate an international perspective through case studies and group work facilitated by faculty members and business practitioners successfully working in Silicon Valley. It provides an ideal learning opportunity for students who want to explore new business models and ideas that can change the world, and to gain the skills necessary to make those ideas a reality.



[What is Stanford University SPICE?]

Officially called the "Stanford Program on International and Cross-Cultural Education (SPICE)", this is part of the Freeman Spogli Institute for International Studies at Stanford University. Since being established in 1976, it has engaged in developing curriculums, from elementary to higher education, specialization development for teachers, and the development of remote learning courses. They provide programs for Japan including the Stanford e-Japan activities.

For more details on the development of digital skills and thinking skills. >>>



Skills gained at EUH 02

Practical Skills

Gaining the practical skill you need to change society.

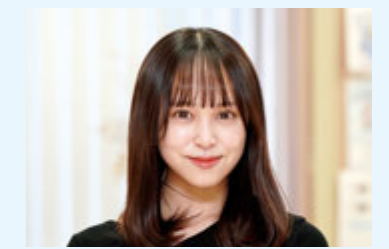


A STUDENT'S VOICE

Gaining problem-solving skills to keep up with the times

Social System Design Course 4th-year
SHIMIZU Nagisa
From Hiroshima Prefecture (Takeda Senior High School)

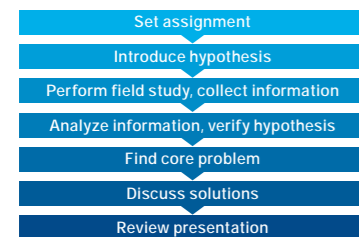
In my PBL classes, I learned that the most important process is identifying fundamental problems and leverage points. Also, in order to propose a solution, it is necessary to categorize various factors, delving deeper to determine their relationship to the problem. The skills I gained by repeating this process will certainly be helpful to me after I graduate. There are currently more and more corporations starting new businesses, such as entering a completely different industrial field. Precisely because of changes in the competitive environment to gain market shares as well as the uncertainty of the future, I believe that I will be able to make use of the forecast I have for the future as well as the skills for solving problems throughout society through a broad perspective that I learned through PBL.



Project Based Learning (PBL) to take on real social / corporate issues

Students form teams of about four people, and through pre-class work, group work, field studies, and more, experience the process for discovering the core problems and investigating solutions to real-world issues faced by companies and local governments. Immediately after entering EUH, freshmen take the compulsory "Introduction to Social System Design" and "Introduction to Project Based Learning", and these help them realize the knowledge and skills that they must acquire. Students will take on PBL exercises several times in their 2nd-year and 3rd-year years to discover factors causing certain social / corporate issues and propose solutions for them. It is designed for students to acquire abilities to discover and solve problems collaborating with others and to pursue tasks.

Flow of PBL exercises



Examples of PBL exercises

Sample categories	Project themes
Private-sector companies(Food products)	Expanding the world of salad to promote vegetable consumption
Private-sector companies(Precision devices)	Helping prevent the progression of frailty in the elderly
Private-sector companies(Regional revitalization)	Continually growing the regional resource of lemons
Private-sector companies(IT)	The active participation of highly skilled foreign professionals has yet to progress in small and medium-sized enterprises in Hiroshima Prefecture
Public interest incorporated foundation	Engaging in initiatives so that 30% of all directors are female

Society at large is our campus

Learn from issues faced by corporations and local governments

In order to actively incorporate real-life problems into our class activities, a "Platform" (the Eikei University of Hiroshima Council of Practical Learning Platform) will be established in cooperation with various entities, such as private companies, NPOs, international organizations, and local governments. Students will have opportunities to tackle real-life problems faced by partner companies and organizations participating in the "Platform", as part of the coursework. Students will think by themselves and take appropriate action to solve those problems, while the coursework will guide them with various skills and knowledge to come up with the best solutions. The Platform is expected to expand further to provide more opportunities for students.

Eikei University of Hiroshima Council of Practical Learning



As of June 2024

For more details on Project-Based Learning. >>>

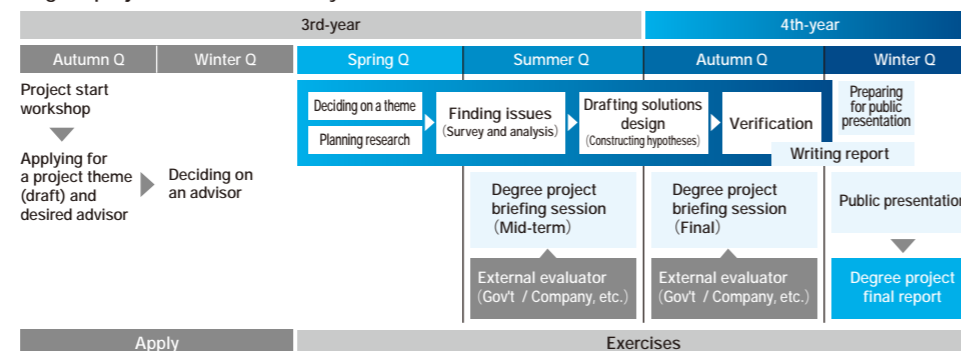


Degree Project

The one-year-long degree project will be done in the third or fourth year. Students set their project theme freely and discover solutions.

Research for individual degree projects is performed through seminars. We invite stakeholders of the company, administrative body, or the like to 2 briefing sessions (mid-term and final) as external evaluators, getting feedback on research from perspectives including novelty and feasibility. Students incorporate that into a report and announce their results at a public presentation.

Degree project (Overall summary)



Study abroad

Cultivating oneself in a new environment

This program aims for students to overcome various issues on their own, to take on and pursue challenges demonstrating perseverance without avoiding difficulties, and to gain the ability to collaborate with people from different cultures and values. There are three types of study abroad: "exchange programs" and "outgoing exchange programs" at universities that have formed an international exchange partnership with us, and "certified study abroad" where students select where to study abroad through a cooperating agency. A scholarship of 50,000JPY/month is provided to students participating in an exchange program.

List of international exchange partner universities

Region	Partner Universities
Europe	Czech Republic: Mendel University in Brno
	Finland: South-Eastern Finland University of Applied Sciences (Xamk), Karelia University of Applied Sciences
	UK: University of Northampton, University of Bradford, Richmond American University London
	Lithuania: Kaunas University of Technology
	France: EPITA (Ecole pour l'informatique et les techniques avancées)
	Germany: Heilbronn University of Applied Sciences
	Netherlands: Windesheim University of Applied Sciences
	Belgium: VIVES University of Applied Sciences
	Croatia: University of Dubrovnik
	Switzerland: Geneva School of Business Administration
Middle East: Turkey: Altinbas University	
Africa: Morocco: Al Akhawayn University in Ifrane	
Oceania: Australia: James Cook University	
Asia	Malaysia: INTI International University
	Bangladesh: Daffodil International University
	South Korea: Chungnam National University, Sungshin Women's University
	Taiwan: University of Taipei, I-Shou University, Asia University Taiwan
Thailand	Mahidol University International College, Sripatum University
	China/Hong Kong: Lingnan University
North America	USA: University of Nebraska at Kearney, University of Central Missouri, University of Hawaii at Manoa, University of Hawaii at Hilo
	Canada: Justice Institute of British Columbia, University of New Brunswick
	Central America: Mexico: Tecnológico de Monterrey

As of June 2024
We have made international exchange partnerships with 34 universities in 22 countries and regions around the world. We will continue to add more exchange partnerships.



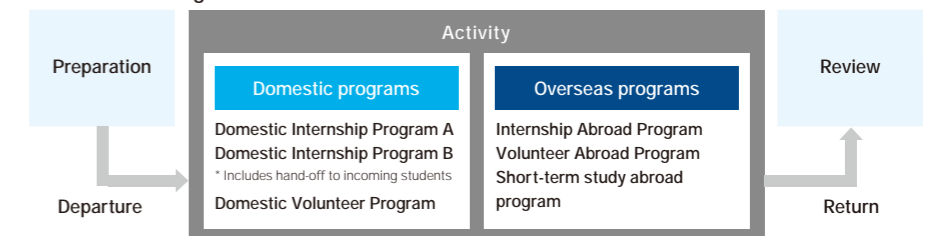
For more details on study abroad. >>>

Experiential / practical programs

Experiential / practical programs for visualizing students' potentials

There are a variety of programs such as study abroad programs, internships, and volunteer programs in collaboration with partner organizations. Students must participate in overseas activities once while enrolled here, taking 4 credits (2 courses) or more. Students engage in program activities and deepen their learning through a curriculum involving preparation and review, as well as advice from their faculty members in charge. Please select a program in alignment with your interests.

Standard learning flow



Overseas Programs are eligible for the students whose VISA status is Resident Student.

For more details on experiential / practical programs. >>>



		1st-year	2nd-year	3rd-year	4th-year
Practical output	Project Based Learning	Introduction to Project Based Learning	Students will tackle Project Based Learning Exercise IA	Project Based Learning Exercise IB	Project Based Learning Exercise II
	Experiential / practical programs		Students are required to participate in at least two programs, one of those overseas, in alignment with their interests	Domestic Volunteer Program, Domestic Internship Program A, Domestic Internship Program B, Short-Term Study Abroad Program	
Basic tool courses	ICT / Data science	Introductory courses: Introduction to ICT, Essential Programming	Fundamental courses: Web Programming and Application Development, Information Delivery Method	Problem Solving with IoT, Data Analysis and Statistical Modeling, Data Visualization	Practical Data Science, AI and Business Application
	Thinking methods	Introductory courses: Logical Thinking, Design Thinking, System Thinking	Fundamental courses: Facilitation, Project Management	Japanese Academic Writing	
Academic input	Liberal arts courses	Introductory courses: To enhance basic understanding of human diversity, social structure, and coexistence with nature	Fundamental courses: To acquire logical foundations for thinking and necessary for solving problems	Advanced courses: (People), (Society), and (Nature) are set as the vertical axis, and "perspectives" are set to cross them horizontally. Students take classes based on their selected perspective, but may also take classes from other perspectives depending on their interests and the project progress.	
	People	Introduction to Social System Design	(People) Introduction to Psychology, Peace Studies, Religion and History	(People) Philosophy and Ethics, Studies in Diversity and Multiculturalism, Media Studies, Japanese Culture Studies, Cross-Cultural Studies, Introduction to Philosophy of Science	(Nature) Introduction to Cognitive Science, Healthcare Services
	Prosperity		(Society) Introduction to Business Administration, Introduction to International Cooperation and Security, Introduction to Sociology	(Society) Public Art, Introduction to Social Psychology	(Nature) Biotechnology, History of Science and Technology
	Planet		(Nature) Introduction to Bioethics, Introduction to Artificial Intelligence, Mathematical Thinking	(Nature) Introduction to Cultural Anthropology, Fieldwork Studies	(Nature) Natural Disaster, Urban Environment, Environmental Engineering, Biodiversity, Global Environment, Ecology
	Practical English (for domestic students)	Introductory subjects / IEP (Intensive English Program) To develop practical proficiency in English to the level where students can take classes in English	Fundamental courses: Academic English, Academic Reading, Academic Writing	Current English, or similar for refining one's proficiency	Presentation English, Communicative English
Japanese (for international students)		Japanese I, Japanese II, Japanese III, Japanese IV, Japanese V, Japanese VI			

Degree Project

SDGs, the world and us

The degree project will be done in the third or fourth year to summarize the four years of learning and practice. Students set their project theme freely and discover solutions.

Extensive educational programs and learning support

Jump-start Workshop

The Jump-start Workshop is held for about the first week after entering the University. It gives students a chance to reflect on their daily life and learning up until entering University, and to think about their career plans and life plan for the future. "Introduction to Project Based Learning" and "Introduction to Social System Design" are also implemented as intensive lectures during this workshop to cultivate the student's sense of involvement in social issues.

Flexible student support via "Port"

40 students form a group called a "port" and 2 or 3 faculty members (different fields of expertise) are assigned to support those students. The offices of the faculty members and the rooms where the students stay are located next to one another to encourage daily communication. Students can easily consult faculty members on selecting courses, their progress, planning their learning schedule, and so on.



Student Calendar

Students will be able to easily engage in various programs, both in Japan and overseas, under our unique quarter system.

For more details on the curricula. >>>



Faculty Members with Diverse Careers



Professor
Applied Linguistics

BURROWS Christian

The Intensive English Program (IEP) offers students the opportunity to develop a practical ability in all 4 language skills. This is intended as a platform to be able to take part in lectures and seminars conducted in English. It offers an opportunity for students to build on the knowledge and ability acquired through high school. If you are motivated to improve your language ability, come and join our student-centered program.



Lecturer
Management Studies

CHENG Ya-Fang

Is management only applicable to companies? Actually, Management as a discipline focuses on solving various problems in society through business. By studying management, the creation of value for customers and stakeholders will be explored, ergo social well-being as a whole will be expected to be promoted. As future changemakers, I expect you to think from a managerial perspective and apply what you learn to your surroundings. I am looking forward to enjoying the exciting journey of management with you together.



Associate Professor
Applied Linguistics

HIGGINBOTHAM George

The Intensive English Program (IEP) will push your language skills so that after six months you will be confident to take your Social System Design courses through English. In the reading classes, for example, you will read a lot of easy books (extensive reading) to increase your reading speed/vocabulary and you will also read academic texts (intensive reading) that are linked to the content courses you will take after the IEP.



Specially Appointed Professor
Environmental Economics

ISHIKAWA Masanobu

I took a Doctor of Engineering on the theme of the environment, studied food engineering (container and packaging recycling), and have conducted education and research in environmental economics at Kobe University since 2003. At Kobe University, we founded NPO Gomi Japan, in which students are core members, and worked on social system design that aims to reduce containers and packaging automatically. Through this activity, students experienced the actual movement of society by working in collaboration with companies, governments, and citizen groups. At Eikei University, I would like to make use of this experience to solve the plastic waste problem and food loss problem together with students.



Lecturer
Health Policy,
Mathematical Modelling

KASAJIMA Megumi

My research aims to design a sustainable society to achieve healthier and better well-being. Health is a significant factor in enhancing the well-being and quality of life for individuals, serving as a fundamental determinant of their happiness and vitality. Using simulation technology, I deepen my understanding of the relationship between health and health determinants and propose health policies to promote health improvement as well as to reduce socio-economic health inequalities. Through the Health in All Policies approach, taking into account social, economic and environmental aspects, I hope to work with you to design a fair and sustainable society for healthy living.



Associate Professor
English Education,
Educational Theory

KASPAREK Nick

English has become a vital, diverse, and dynamic global language for communicating and co-constructing ideas across space and time. As such, active English study develops students' capacity to learn from and join global academic conversations. Moreover, with language mediating our experience of our inner and external worlds, new potentialities for thought, action, and learning can emerge for ourselves and others.



Professor
Research Design

KAWASE Maki

I teach the required Project Based Learning Exercise (PBLE) courses. In class, we will examine the real problems in our society and our environment. We will figure out why there are problems and how we can find clues to solve them, and then try solutions. In this process, we will learn and practice the basic research methods to gather and analyze information. We will also learn ways to create solutions and evaluate them for improvement. Building on the PBLE, I hope you will find a way to design your own question for your degree project!



Professor
Data Science, Artificial
Intelligence (AI),
Energy Management

KAWAMURA Tsutomu

Digitalization and globalization are progressing in the world, and societal and industrial transformation is advancing rapidly. I lecture on the basics of digital technology, such as mathematics, data science, and AI, which will be necessary in the future. I also study technologies to optimally operate energy systems (such as solar power generation, batteries, heat pumps, electric vehicles, etc.) in locations such as factories, buildings, and houses to achieve carbon neutrality. I aim to control energy systems with high efficiency by using AI to analyze big data on energy consumption. In the future, I would like to apply AI technology to other fields and contribute to solving social issues by conducting joint research and consultation with local governments and companies.



Associate Professor
Sociology

KAYUKAWA Junji

I have explored the ELSI (Ethical, Legal, and Social Issues) surrounding cutting-edge medical technologies and their research, including stem cells, cloning, assisted reproductive technologies, prenatal diagnosis, and genome editing. The results of my research have been published in several books (e.g., Genome Editing and the Birth of Cell Politics, Seidosha, 2018). I have often contributed articles and book reviews on science, technology, medicine, art, and film to a variety of media. In recent years, I've been examining the ethical issues surrounding medical research involving certain vulnerable populations.



Professor
Natural Science

**LASSALLE
Michael Wolfgang**

Our world is undergoing rapid change, with big issues facing us now and in the future. The global temperature is increasing, while biodiversity is decreasing, unknown diseases are emerging, and wars are being fought again. How can you become a problem-solver? Having a background in science and technology will provide you with the creative knowledge to overcome the economic, social, and environmental challenges of the future. Join me on this journey and see how rewarding, fun, and engaging natural science can be.



Lecturer
Biodesign, Information Engineering

MATSUURA Yasuyuki

The first step to creating an innovative solution for a social problem is to understand the situation's essence by immersing oneself in the actual site and investigating the issue from various perspectives. Let's learn and practice how to do it and experience the difficulties and the fun.



Associate Professor
Science and Society, Social Studies of
Science and Technology

MIZUSHIMA Nozomi

Science and Technology (S&T) are deeply embedded into our modern life. They have changed not only our daily activities but also our concepts of "life" or "nature." I'm interested in the relationships between S&T and society. How do people perceive or react to a certain newly investigated technology? How does technology change responding to the public attitude? When we think about SDGs, from unpaid care/domestic work at home to global energy issues, we cannot avoid thinking about how we can use or not use S&T in our society. I look forward to discussing with you these issues together in near future.



Professor
Data Science

MORI Toshiki

Our surroundings are filled with data and information, and this trend is accelerating with the widespread use of the internet and other technologies. Let's learn the knowledge and skills of data science and AI (Artificial Intelligence) together, and work towards creating a better world.



Associate Professor
Public International Law

NAGAOKA Sakura

We may not always be conscious of it, but our lives are always supported by the Law. More than we realise, the Law provides a framework for our daily lives and protects us. As the Showa, Heisei and Reiwa eras have progressed, the values of people have been changing. And now we are expected to respect diversities and to collaborate with others. The requirements of this new society must be met by a new social framework or law (*i.e., Neque mittunt vinum novum in utres veteres*). As Japan and the world seek a new society, problem-solvers are in demand. My lecture gives you the chance to challenge various new problems together using the Law.



Associate Professor
Social Psychology

NAKAJIMA Motohiro

Our thoughts, feelings, and behaviors are influenced by people around us and the surrounding environment. At the same time, our thoughts and feelings have influence on the decision making process of other people. But we generally are not aware of that bidirectional relationship. Under which conditions do we get influenced by others? When do we have positive influences on others and develop good relationships? I look forward to discussing and learning these topics with you.



Associate Professor
Finance

ONO Koji

Supreme-category national civil servant. Awarded FCO Scholarships to study at Imperial College, University of London, where he received both MSc and DIC degrees. Research director of a governmental Institution. Chairperson of international conferences, university professor. Current his research interest is the "Syushinhosyoushintaku" or Lifetime Guarantee Systems Trust. Chartered Member of The Securities Analyst Association of Japan (CMA). 1st grade Certified Skilled Professional of Financial Planning. Eiken Grade 1. MSc (University of London), DIC (Imperial College London)

Faculty Members with Diverse Careers



Professor
Literature

PETKOVA Galia

University years can be the best time of your life. It is entirely up to you what you make of it. You will make friends for life; you will grow intellectually and emotionally. How much you learn depends on you. Your teachers are here to help you and to stimulate you to learn, not to force you. Be curious – everything is interesting if you pay close enough attention. Use these four years well and you will gain both solid knowledge and confidence. But, most of all, learn to think critically, to analyse and understand human behaviour and society – this is the purpose of a university education. And spend time studying abroad. For me, this was my most constructive experience.



Professor
Environmental
and Chemical Engineering

SAGEHASHI Masaki

Water is essential for all living things. The conservation of the water environment is thus saving our precious planet Earth by making ecosystems more sustainable. Computer simulation is a powerful tool to understand the underlying mechanisms of water circulations and qualities. Now, I am especially working on water environmental simulations under climate change and other human impacts such as plastic emissions. Computer visualization of the water environments is very interesting. And clear evidence elucidated by simulations makes the discussion on the conservation of the environment more effective. Let's talk together about what we should do for a sustainable world with environmental simulations!



Professor
Project Management

SADAKANE Motoi

Society is changing at an ever-quicker pace, and the environment surrounding project advancement as well as advancement itself have become very difficult. Against this backdrop, various members must bring diverse skills together in order for a project to achieve its targets. Conversely, it can be said that skillfully advancing a project allows for members to fully exert their unique skills to make meaningful contributions. Recently, many activities throughout society are now carried out as projects, and the skills for advancing projects are required in all kinds of places throughout society and daily life. Let us think together and continue to create as we work together for a society where people can utilize their own skills and enjoy working.



Associate Professor
International Cooperation, Gender

SEKO Motoko

In the past years, the world has faced many global challenges, such as worsening climate change, a massive global pandemic, a volatile economy, more people in poverty, and multiple wars. Those are too big problems for any single country to solve – thus the importance of international cooperation is more evident than ever. As the concerned citizens of this world, what can we do? Let's gather in Hiroshima and discuss our future together!



Professor
Regional Revitalization, Business
Administration

SODA Yoshinobu

Nowadays, we see harsh environmental change and significant value conversation. We are facing issues that cannot be solved using conventional methods. This may seem like a dilemma at first glance, but it is a big opportunity for people who are not confined by established interests. The concept of "social system design" is important for making use of this opportunity. It is essential to learn and practice this. At EUH, we provide programs and a platform to that end. Come design the future with us!



Associate Professor
Cultural Anthropology

TAGUCHI Yoko

A university is a special place where you can focus on learning within society and a little away from society as well. For example, cultural anthropology teaches us that what is considered "normal" in one society is not normal at all in other societies. If such differences exist, things that seem unchangeable to us might also be changed by tinkering with the details. Let's look at things from different angles, think deeply, and try out new ideas at Eikei University.



Associate Professor
ICT

TSUCHIMOTO Yasuo

The advent of generative AI has expanded how we use computers as tools. As a result, the possibility of realizing what we want to achieve by ourselves has dramatically increased. AI will change the way we work. What do you think is required in such an era? Now that we live in a world where everyone can produce similar output, what is important is the ability to take action and take on challenges. Instead of taking action because someone tells you to do something, think about what you want to achieve and take the first step to create the world you aim for by proactively working on your own and using AI as a tool to your advantage.



Professor
English Literature, English Education,
Cross-cultural Understanding

UESUGI Yuko

What do you need to master English? It is very important to improve the four skills of English (reading, listening, speaking, and writing). However, I think it is more important to have a positive attitude (mindset) to use another language and try to understand different opinions and cultures. At Eikei University of Hiroshima, we have the Intensive English Program, where students intensively learn not only the four skills but presentation skills of English for six months after entering the university. They will be immersed in English every day. The goal is to develop their ability and mindset to take any course in English in the following quarters.



Associate Professor
Philosophy

WATANABE Kazunori

People sometimes question whether philosophy is useful, but in doing so, they already presuppose certain criteria or values for what is considered "useful". Philosophy, however, has the capacity to challenge and question these very criteria and inquire into the very nature of what it means to be "useful". Furthermore, philosophy can even question what philosophy itself is. In an era where various information is rapidly updated, I hope that each of you can acquire the ability to deeply contemplate the fundamentals of things and critically reflect on their premises and essence.



Professor
Meteorology, Data Science

YAMADA Yoshinori

I am in charge of lectures on global environment, natural disasters, and data science. Earth science involving atmospheric, hydrological, and terrestrial phenomena is closely related to concerns such as global environmental issues and disaster prevention. Learning about various phenomena of the Earth provides a basis for understanding global environmental problems and useful knowledge to avoid being involved in natural disasters. On the other hand, data science has become an essential field now because it uncovers hidden relationships in large data sets. Such findings can be helpful for decision making and strategic planning for example. The fields using data science will expand in future.



Associate Professor
Security Studies, Peace Studies

YASUTOMI Atsushi

We are witnessing wars, conflicts and other forms of violence depriving people of wealth, health, and education in various parts of the world today. Why do wars and conflicts occur, and how do we prevent them from recurring? How do we end wars? How can we make peace in our world? – Scholars, religious leaders, politicians, practitioners, students, and the like, have asked these simple but very difficult questions for centuries. At Eikei University of Hiroshima, we will seek answers for these important questions collaboratively. I am very much looking forward to finding some keys to solve these questions together.

Visiting Professor



BEALE Alison

Originally from the UK, currently Director, University of Oxford Japan Office. Career in international cultural relations in Japan and overseas. Holds a number of non-executive director roles in the education, business and cultural fields.

The world today is changing rapidly and we need to think creatively and with passion about how to solve the various global challenges that we face. I hope you will enjoy developing your skills as global citizens in order to create a better, more prosperous, and more peaceful society for the future.



FUJINO Hideto

Founded Rheos Capital Works in 2003. Has served as Chief Investment Officer (CIO) since the founding. Abundant experience as a fund manager with deep expertise in small mid cap and emerging growth equity investments.

The society of the future will be created by people who have a sense of excitement about new challenges, without being tied to the values of the past. Join us in creating the values of the future with excitement in an organization free of strings. This will lead to individual happiness.



FUKASAWA Naoto

Has designed for more than 70 major brands worldwide, from electronic equipment to mobility, furniture, and architecture. Is a vice president at Tama Art University and the director of The Japan Folk Crafts Museum.

The future of education will surely not be bound by gathering in the same place or studying at the same time. It will provide an environment where students can freely study their interests. I believe that what's important is how that education leads to emergence. We live in an era where creations can intermingle to create new creations previously unimagined. Let's make emergence.



MAENO Takashi

Serves as Dean and Faculty of Well-being of Musashino University and as Professor at the Graduate School of System Design and Management of Keio University. Ph.D. in engineering.

We conduct research and education in system design and management studies that look at the trees and forest. We also focus on well-being studies that aim for a well-being society.



YAMAGUCHI Shu

Independent researcher, author, and public speaker. External Director at Nakagawa Masashichi Shoten Co., Ltd. and at Mobile Factory, Inc.

Currently, the world is facing a problem, wherein right answers are becoming obsolete. The ability to "provide the right answer" was conventionally considered a criterion for excellence; however, the value there is decreasing. So, what kind of human resources will be deemed valuable in the future? I believe it will be people who can provide "good questions". I hope students at EUH will gain the ability to provide "good questions".

For more details on faculty members. >>>



My Vision

Gaining skills that can be applied in various workstyles and different communities

Social System Design Course 4th-year

EMERI Eijaz Rafee

Tenby International School Setia Eco Park (Malaysia)

Finding a unique way of learning that can be used after starting a career

After graduating high school, I wanted to study abroad in Japan. I found Hiroshima to have a more interesting feel than Tokyo or Osaka, and most of all, I was intrigued by the unique and innovative courses provided by EUH, which are focused on liberal arts and unlike those at other universities. The actual learning always feels fresh. Through classes including Facilitation, Project Management, and Studies in Diversity and Multiculturalism, I learned ways of thinking and practical skills I never had before. I had a



particularly valuable experience in PBL II. That was going to Osakikamijima for fieldwork. This was the most ambitious place we had ever gone. We spent two days there engaged in activities

under our theme of, "creating an environment increasing overall life satisfaction / well-beng". We went around the island, holding interviews and experiencing what life is like for the local residents as we surveyed what kind of environment is needed for well-being. However, there is definitely no clear answer to this theme. This is because everyone has different values and understandings of well-being. Also, as eclect, Inc., the corporation cooperating in our project, accepted a wide range of thoughts and various ideas, this allowed us to find new perspectives on problem-solving.

Ambitious and valuable experiences changed my perception of things

By this, I mean that providing solutions does not necessarily make the people on the island happier. Like we learned in our survey, people have different ways of perceiving well-being. While daily

Wanting to independently disseminate the possibilities for social system design

I am currently engaged in my degree project, where I aim to encourage the prosperity of cultural tourism and promote local hidden gems in Hiroshima. Ensuring that money goes back into the local economy to help establish independence is the social system design that we have learned. I hope to apply these skills to revitalizing local economies and businesses in the future.

life is not as convenient as in a large city, the people are happy with their lives. We discussed from various angles how people's lives could impact a corporation's initiative, using communication to repeatedly share opinions and considered what we could do to form a consensus. This taught me many important ways of thinking.



LIFE STYLE

Daily Life

Dormitory life

The door for international students is always open; EUH's support expanded my world

DOAN THI TRANG Nhung, 2nd-year



I am an overseas student from Vietnam, and I live with two other students in the dormitory. Having roommates helps me improve my communication skills, and I also got better at cooking. Usually, I wake up at 8:30 each morning and then head to class at 9:00. After my afternoon classes, I go to club activities or to my part-time work, and I always go to sleep at midnight. My schedule is always packed tight,

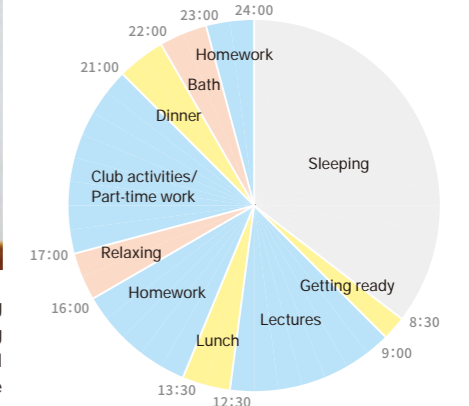
but when I have time, I relax in my room by watching anime, playing video games, or singing and dancing to my favorite K-POP music. There are international students from various countries and regions in the dormitory, so it is a good environment for improving my language skills. I am very thankful towards EUH for their support, which allows me to go about my university life with peace of mind.

Average Monthly Expenses when Living in the Dorm

● Rent	32,500JPY (Approx. 210USD 195EUR)
● Utilities	7,500JPY (Approx. 50USD 45EUR)
● Meals	30,000JPY (Approx. 195USD 180EUR)
● Communication expenses	3,000JPY (Approx. 20USD 20EUR)
● Insurance	7,000JPY (Approx. 45USD 40EUR)
● Other miscellaneous expenses	10,000JPY (Approx. 65USD 60EUR)
total	90,000JPY (Approx. 585USD 540EUR)

*1USD=155JPY as of May 2024
1EUR=167JPY as of May 2024

DOAN THI TRANG Nhung's Typical Day



Since enrolling at EUH, I have met people who come from various places around the globe. I recommend EUH and its dormitory to anybody who wants to undertake various challenges to select their own future.

Living on my own

I am conscious of my daily rhythm and health, precisely because I am on my own. I am enjoying my EUH life and relishing the feeling of true independence

MIYAMOTO Daisuke, 3rd-year



Since I began living on my own, I started paying more attention to my daily rhythm and diet. I am particularly careful about eating enough nutrients. It was difficult to manage my money. I learned to avoid wasteful spending; for example, when buying food to cook, I purchase just enough to make sure there are no leftover ingredients. On the other hand, I enjoy the new challenge of making authentic cuisine,

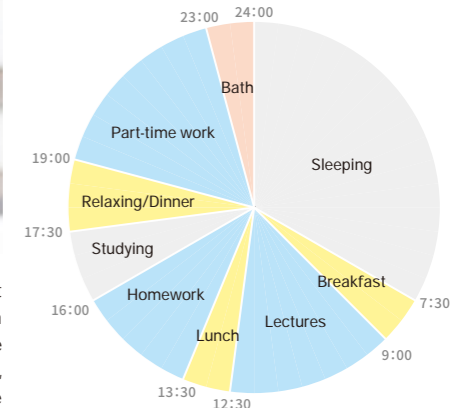
and I also enjoy my own time by reading more. At school, I enjoy my time spent eating lunch with friends, planning dinners, and discussing what we learned after classes. I often tend to be by myself, but I am comfortable because I balance that time by interacting with people at university or in my part-time work, and by going on walks for a change of pace.

Average Monthly Expenses when Living Alone

● Rent	60,000JPY (Approx. 385USD 360EUR)
● Utilities	5,500JPY (Approx. 35USD 30EUR)
● Meals	10,000JPY (Approx. 65USD 60EUR)
● Communication expenses	3,000JPY (Approx. 20USD 20EUR)
● Other miscellaneous expenses	12,000JPY (Approx. 75USD 70EUR)
total	90,500JPY (Approx. 580USD 540EUR)

*1USD=155JPY as of May 2024
1EUR=167JPY as of May 2024

MIYAMOTO Daisuke's Typical Day



Even on days off, I am conscious of "early to bed, early to rise". I lead a fulfilling university life here, discovering entirely new interests and absorbing living English from the international students at the university.

For more details on the lifestyles of EUH students. >>>



ENVIRONMENT

Surrounding Area

Our campus is a 15-story building.

Located in the city center about 10 minutes on foot from the JR Hiroshima Station, this location is highly convenient for commuting while also providing a quiet environment for education and research. The great accessibility makes it easy to collaborate with various entities such as companies, allowing for a high-quality learning program.



See here for more details on the surrounding area. >>>



FACILITY

Facilities

Campus Map

15F Eikei Top / EUH Cafeteria, etc.

14F English Learning Lounge, Learning Commons, Career Design Office, etc.

9-13F International Dormitory

8F Classrooms, Academic Affairs Office, etc.

4-7F Classrooms, Faculty Offices, Ports

3F PBL Room, Faculty Offices, Ports

2F Library, Office

1F Project Workspace, Community Commons

1F Project Workspace



This space is the "face" of EUH. Conceived as a shared venue for creating new social values, the space stimulates the creative power to generate new things and embodies a part of Social System Design. The space includes a Seminar Area for hosting seminars, workshops, and other events, and a Community Area for exchanges between students and various local stakeholders such as corporations and local government officials.

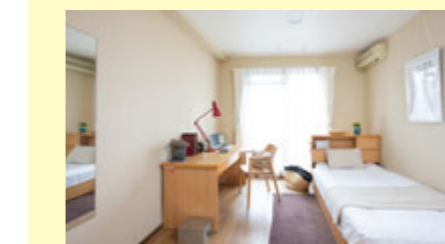
1F Community Commons



This is kept wide open as a place of exchange between students and community members. Various events are held here for interacting with many different members of the community, from children to adults. Students have installed a street piano here as the "EIKEI PIANO PROJECT", and events planned by students will be held here in 2023 as well.

9-13F "On-campus" International Dormitory

Study and life are combined at this international dormitory. It is a place where students can improve their understanding of the world through living with Japanese and international students. There is no manager at the dormitory. The Resident Assistants (RAs) and the Student Assistants (SAs) on each floor take the lead in supporting dorm residents while coordinating with the university faculty and staff. The international dormitory continues to evolve as residents actively work to improve and enhance dormitory life.



Resident Assistants (RAs)

There is an RA on each floor. They check on the status of their floor, periodically communicate with the University, and arrange exchanges on their floor. RAs live in a 2LDK unit by themselves, but share part of that unit space as a place for exchange activities with other dormitory residents.

Student Assistants (SAs)

The responsibilities of the SAs are rotated among the dorm residents. They check on groups of about five students and support them so that they feel comfortable with life in the dormitory. The SAs also help the RAs to organize exchanges on their floors.

Eligibility Students of Eikei University of Hiroshima

Length of stay Maximum two years

Room type (Private room size)	Private room		Shared room		RA
	1R (23.55m ²)	2LDK Western/Japanese rooms (12.1 to 12.5m ²)	Private room Type A, Western room (18.2m ²)	Private room Type B, Western/Japanese rooms (12.1 to 12.6m ²)	
No. of rooms	74	5	5		5
No. of residents/room	1	2	3		1
Dormitory fees (monthly amount) (fees per person for shared rooms)	46,000JPY Approx. (295USD) (275EUR)	32,500JPY Approx. (210USD) (195EUR)	37,000JPY Approx. (240USD) (220EUR)	32,500JPY Approx. (210USD) (195EUR)	46,000JPY Approx. (295USD) (275EUR)
Service fees (monthly amount)	Approx. 1,000JPY (Approx. 6USD 6EUR)(rough estimate)(electricity for shared space, internet fees)				

*Utilities fees are not included in the above rent. *International students are prioritized for the on-campus dormitory. *1USD=155JPY as of May 2024 1EUR=167JPY as of May 2024

15F Eikei Top



This open space offers a panoramic view of Hiroshima City. It's perfect as a place for studying alone or having discussions with friends. On days with clear weather, you can see the islands of the Seto Inland Sea.

15F EUH Cafeteria



This student cafeteria opened in November of 2023. In addition to a general menu, they also provide a menu for international students.

14F English Lounge



Only English is permitted in this space. English-language news is always available on the TV and in daily newspapers, and there are many shelves of English-language books and DVDs. Faculty members also provide students with opportunities to use English outside of class.

3-8F Classroom



Equipped with movable desks, chairs, and white boards, classrooms provide an environment for active learning.

Empowering your future path! The Career Design Office, your reliable support for job hunting.

Assistance with interview techniques and writing documents



Our university also features a Career Design Office designed to provide comprehensive support for job hunting. At our Career Design Office, you will receive guidance on interview techniques, assistance with writing essential documents, and personalized consulting services delivered by our team of experts. Additionally, the career design office offers valuable resources and information to keep you updated on job fairs, and networking opportunities. We foster a supportive environment that encourages your personal growth.

Regular consulting professional career staff offer



Job fair events and information



Support for diverse career designs

The program allows students to connect to society and corporations throughout their four years here as they think about their own career. EUH supports our students who are considering various kinds of career designs.

Career Design Office

The Career Design Office acts as a hub station, constructing a network with career mentors, the Eikei University of Hiroshima Council of Practical Learning Platform, and related groups such as communities for cultivating entrepreneurs to support student activities and diverse career designs. Also, dedicated career advisors offer career advice whenever needed. In addition to browsing books and other materials related to their careers, students can use open spaces for

consulting with faculty members or career mentors, or they can use private spaces for online interviews with corporations.

* Possible post-graduation paths

- (1) With their experience considering new strategies based on social issues, soon after entering a corporation, the public sector, a global company, an international agency, a department in charge of strategy promotion at an international NGO, or the like, graduates may succeed by making proposals for new projects.
- (2) Graduates may start a business, expanding their new system or service globally and locally.



Coaching

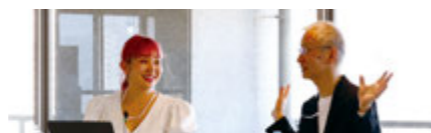
Under the motto of "No student left behind", EUH provides coaching to all students, supporting them to engage in dialogue with themselves. Professional coaches listen closely to each and every student, helping them to visualize the gap between where they are now and where they want to be in the future and to find a path forward.

Career Mentor System

Students can always hear advice on career design from diverse working individuals (career mentors) as they work towards achieving their career path after graduation. There are over 30 career mentors cooperating, including people engaged in entrepreneurship as well as people working in the local, global, and glocal fields.

Evening Lounge

We have established an Evening Lounge program to act as a place where students can freely exchange opinions with people working on the front lines of society, thereby supporting students' career building.



For more details on career support. >>>



The field is limitless! My ideal career design

Dreams of EUH students and their expected career paths developing from their practical programs

My Dreams

In the future, I would like to find a job in Japan where I can utilize both English and Japanese, helping Japanese people who want to learn English and being "chikara" (support) for international residents here in Japan who are struggling with the Japanese language. While doing that, I also aim to create a business in my home country of the Philippines that combines Japanese Onigiri with Filipino traditional dishes like Adobo.

Activities

At EUH, we acquire a globally sensitive mind in acknowledging diversities and differences, interdisciplinary skills and knowledge to address societal problems, and strategic thinking skills to provide practical and innovative ideas and solutions to specific issues, in order to become globally competitive change-makers. Through the frequent and insightful group discussions as well as project completion with a focus on the process and more, I am confident that I have become a step closer to becoming a change-maker and, of course, a better person.

Possible career paths

- Planning for global service providers
- Foreign-investment enterprises
- Manufacturing companies



ARAYAN Renz Kayle Roble, 2nd-year (Philippines)

My Dreams

In the future, I want to work as a business diplomat and also pursue a career as an entrepreneur. I am interested in the business sector, which holds great opportunity for transforming small-scale business. My short-term goal is to open a cassava food processing center in my home country of Liberia, which I believe will empower farmers.

Activities

We live in a world that has great potential and uncertainty, and EUH impacts us in a practical way with its vision-driven education. I have been focused on business-related courses, like Finance, Economics, and Project Management, and in my extracurricular activities, I have been researching the market potential in Africa and specifically in Liberia, assessing the potential of digital technology for SMEs. In the PBL exercises, I achieved my dream of interacting with an international organization under the United Nations (UNITAR Hiroshima). About 90% of the solutions we proposed were accepted, and this was a valuable experience for me.

Possible career paths

- Business diplomat
- International organizations
- International NGOs



TAMBA Augustine, 3rd-year (Liberia)

My Dreams

Throughout the fieldwork of collecting data to analysing the statistics, I realized that I love working with data. This experience inspired me to pursue a career as a data analyst. If possible, I would like to work at an international corporation or organization that cultivates a global mind, helping to select valuable information and empower the decision-making process.

Activities

EUH provides many opportunities to connect closely to society, and also involves a great deal of fieldwork. For example, we went to the Peace Memorial Park to collect diverse perspectives on LGBT rights from both Japanese people and foreign tourists. In the PBL exercises, we held interviews at a city office in Higashihiroshima, investigating issues to help foreign residents carry out official procedures more easily. These experiences not only helped my communication skills, which are important for data analysis and business analysis, but also boosted my own creativity.

Possible career paths

- Planning and administering regional contribution work
- Planning for global service businesses
- Infrastructure industry



NGUYEN PHAN HOANG Yen, 4th-year (Vietnam)

For more messages from current students. >>>



Extracurricular Activities

There are more than 20 activities.



Eikei Dance Club

The Eikei Dance Club was started the same year the University was founded. It is fun even for beginners. We choreograph our dances across a wide range of genres.



Korea Club Day by day

We engage in intercultural exchange by learning Korean, making Korean food, learning about traditions, and more.



S'more

We are a community that aims for EUH students to encourage and support one another's activities, using such connections with others to create valuable places and opportunities.



Eikei SUP

We do SUP surfing on the rivers in front of the Atomic Bomb Dome and beside the new soccer stadium in Hiroshima City. We also offer SUP guide services for foreign tourists.



Eikei Photography Club

We not only share knowledge and techniques, but also inspire one another as we experience the fun and interesting aspects of photography.

Eikei Journalist Club

We aim to raise awareness about the activities of clubs and individuals who are active within the university through information dissemination. We aim to create closer ties between the university and the local community and contribute to the local society.

Hamo.nature

Through activities involving songs and nature, we remember the extraordinary feeling of fun and excitement, creating lateral connections between people.

EIKEI FSC (Fighting Sports Club)

Through these club activities, we aim to improve our physical and mental health, and to enable us to protect ourselves through self-defense and other techniques in preparation for overseas activities.

Eikei Gaming Cub

Using gaming as a form of entertainment to deepen connections between people, we actively engage in various activities across different media to interact with and entertain others.

Exchange Culture Club

We engage in club activities with the aim to provide many students with the opportunity to experience Japanese culture at EUH.

EUH Student Festival Executive Committee

We prepare for holding a Student Festival which participants from all four years can enjoy. To make our Student Festival the best it can be, we need all of you to participate! We hope to see you there!



For more details on extracurricular activities. >>>



Admission Policy



We admit students from Japan and overseas with the following qualifications, abilities, and motivations.

- | | |
|--|--|
| Basic academic skills | Willingness to contribute to society |
| Broad vision | Positive attitude toward studying with a sense of purpose and a vision for the future |
| Strong interest in inquiring about various cultures, histories, societies both at home and abroad, and international relations | Positive attitude toward actively communicating with others |
| Willingness to learn | Positive attitude toward taking initiative and involving others in addressing various challenges |
| Willingness to strengthen one's ability | |

Selections

Matriculation	Spring (April)			Autumn (September)
	Integrated Selection	High-School Recommended Selection	General Selection	Selection of International Students
Admissions Category				
Number of Students Accepted	50	20	10	20

Procedures from Application to Enrollment

- Check Application Guidelines
- Submit Application Documents
 - Prepare Application Documents
 - Register via Eikei's Online Application System
 - Pay Application Fee
 - Submit Application Documents
- Receive Notice of Results (First-Stage)
- Complete Online Examination via Zoom
- Receive Notice of Final Results
- Meet Matriculation Deadline
- Enroll with Our Congratulations!

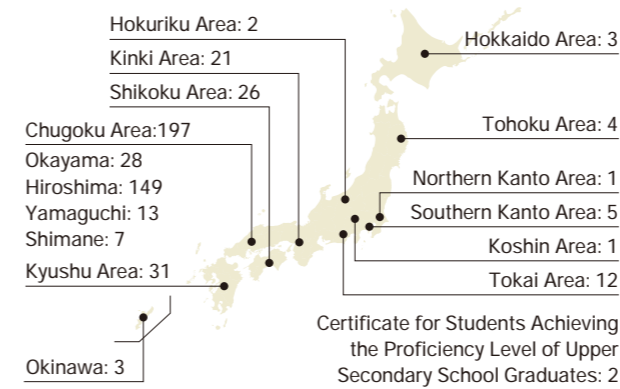
For inquiries related to enrollment and selection: Academic Affairs Office, Admissions Section
TEL: +81 (0) 82-225-6224
E-mail: admissions@eikei.ac.jp

For more details on admissions. >>>

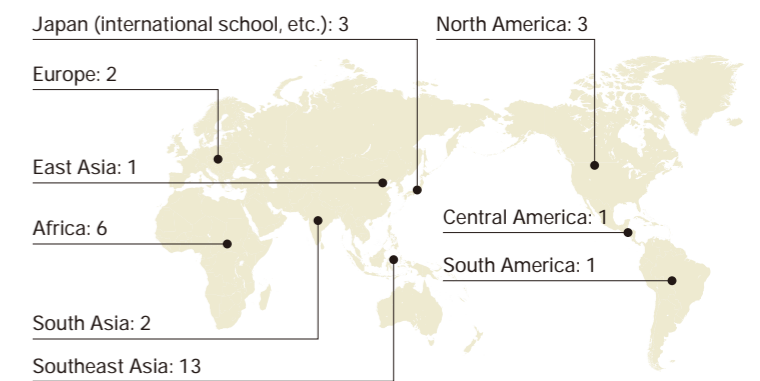


Locations of Senior High Schools Where EUH Students Come From

■ Japan: 308 students in total



■ Overseas: 32 students in total



*Students enrolled as of April 1, 2024

Cost of Attendance

Eikei University of Hiroshima is a public university, so its tuition fees are lower than those of private universities. Additionally, we offer generous scholarships to ensure that international students can study comfortably.

Scholarships for all international students

Tuition Exemption of

50%

+

Special scholarship This scholarship can cover the Enrollment Fee and Tuition.

per month 50,000JPY Approx. (320USD / 300EUR) × 12 months × 4 years = Total 2,400,000JPY Approx. (15,360USD / 14,400EUR)

You can spend it on the Enrollment Fee and Tuition and still have a surplus amount.

Enrollment Fee + Tuition	Surplus Amount
1,467,000JPY Approx. (9,465USD / 8,780EUR)	933,000JPY Approx. (5,895USD / 5,620EUR)

In order to receive tuition reduction and special scholarships, students must meet the following criteria (1) household income (2) academic performance

Monbukagakusho (MEXT) Honors Scholarship

+

For more information, including eligibility requirements, please refer to the JASSO website. >

Each scholarship program has its own eligibility requirements, and applicants must undergo a screening process based on factors such as household income and academic records.

Required funds

<p>Application Fee</p> <p>17,000JPY Approx. (110USD / 100EUR)</p> <p>Payment must be made at the time of application.</p>	<p>Enrollment fee</p> <p>394,800JPY Approx. (2,550USD / 2,360EUR)</p> <p>Payment must be made between acceptance and enrollment.</p>	<p>Tuition Every year</p> <p>per year 535,800JPY Approx. (3,460USD / 3,210EUR) × 50%</p> <p>Payment must be made in two installments by the specified date every year.</p>
--	---	---

Please note that you will also need to budget for additional expenses such as cost of living textbooks, extracurricular activities, and studying abroad, which may include transportation and accommodation costs. This special scholarship is a time-limited program that will be available until the students who are scheduled to enroll in the 2025 academic year. The operation after the target year has not yet been determined.

*1USD=155JPY as of May 2024 1EUR=167JPY as of May 2024